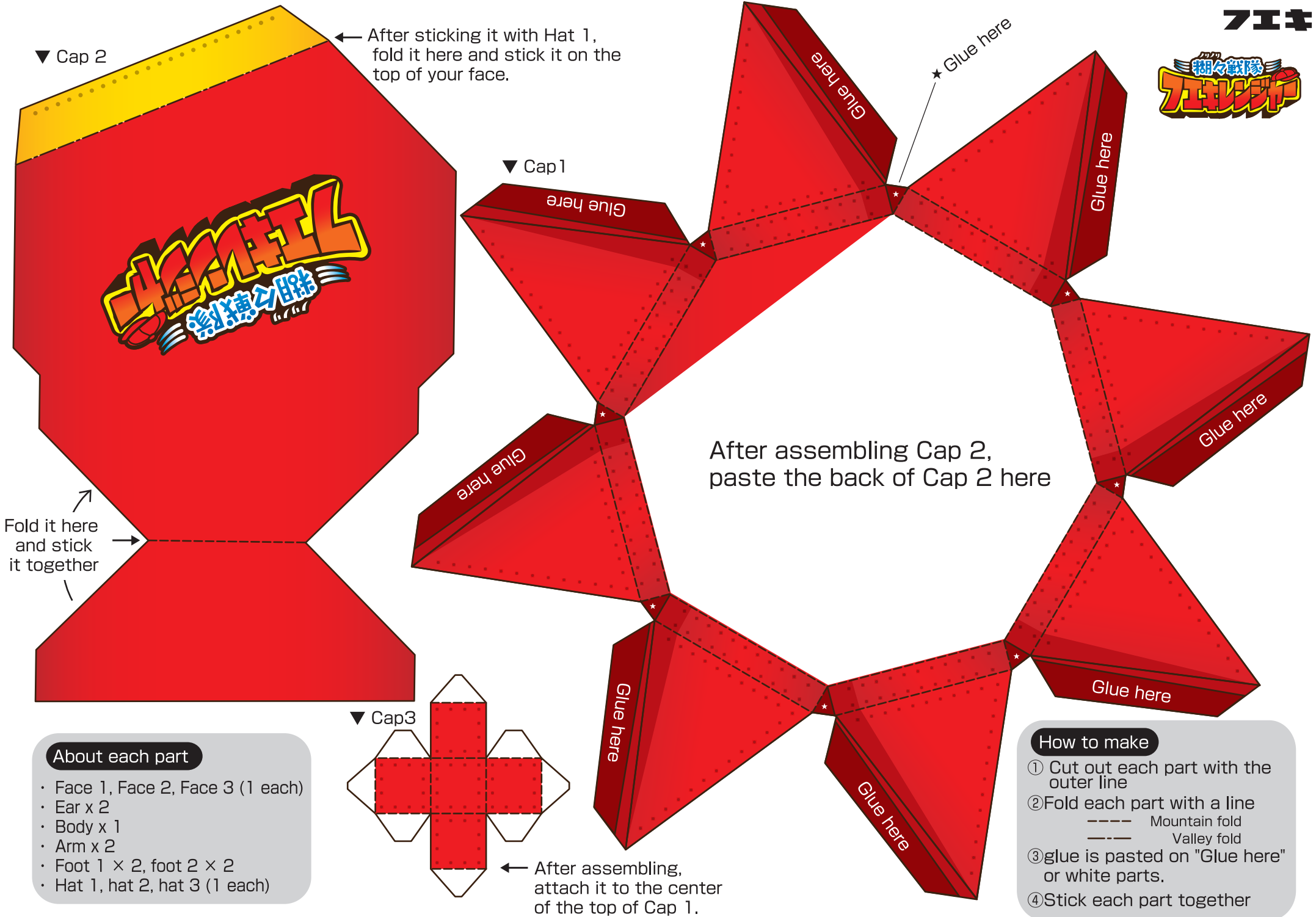


七ヶ



After sticking it with Hat 1, fold it here and stick it on the top of your face.

Fold it here and stick it together

After assembling Cap 2, paste the back of Cap 2 here

After assembling, attach it to the center of the top of Cap 1.

About each part

- Face 1, Face 2, Face 3 (1 each)
- Ear x 2
- Body x 1
- Arm x 2
- Foot 1 x 2, foot 2 x 2
- Hat 1, hat 2, hat 3 (1 each)

How to make

- ① Cut out each part with the outer line
- ② Fold each part with a line
 - Mountain fold
 - Valley fold
- ③ glue is pasted on "Glue here" or white parts.
- ④ Stick each part together